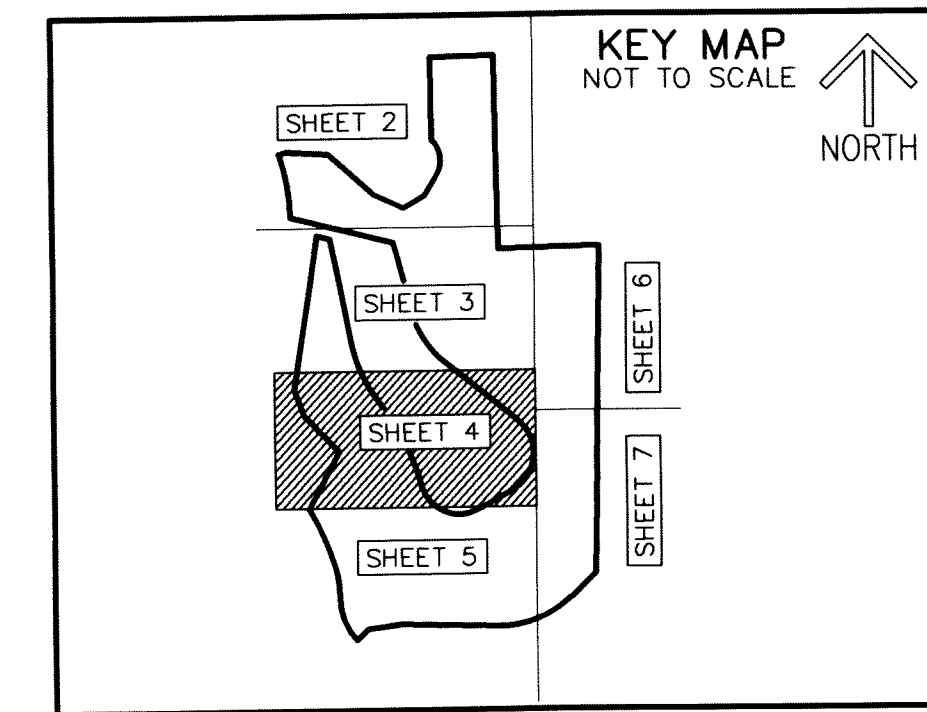


ALTIS LAKE PUD

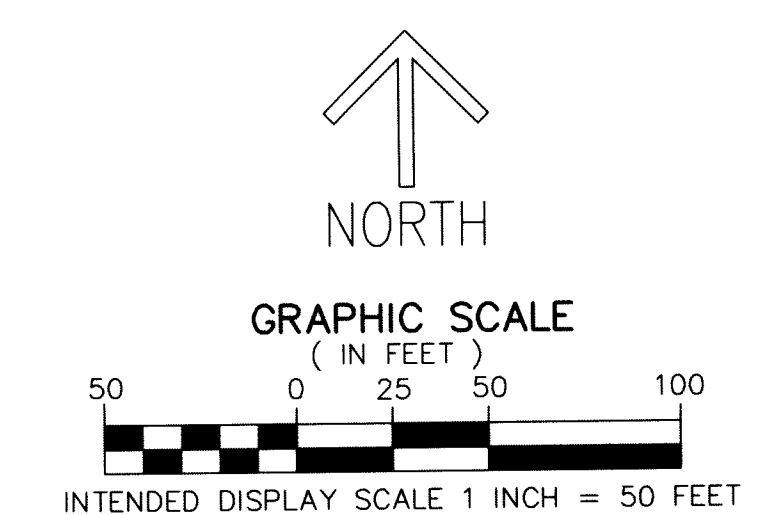
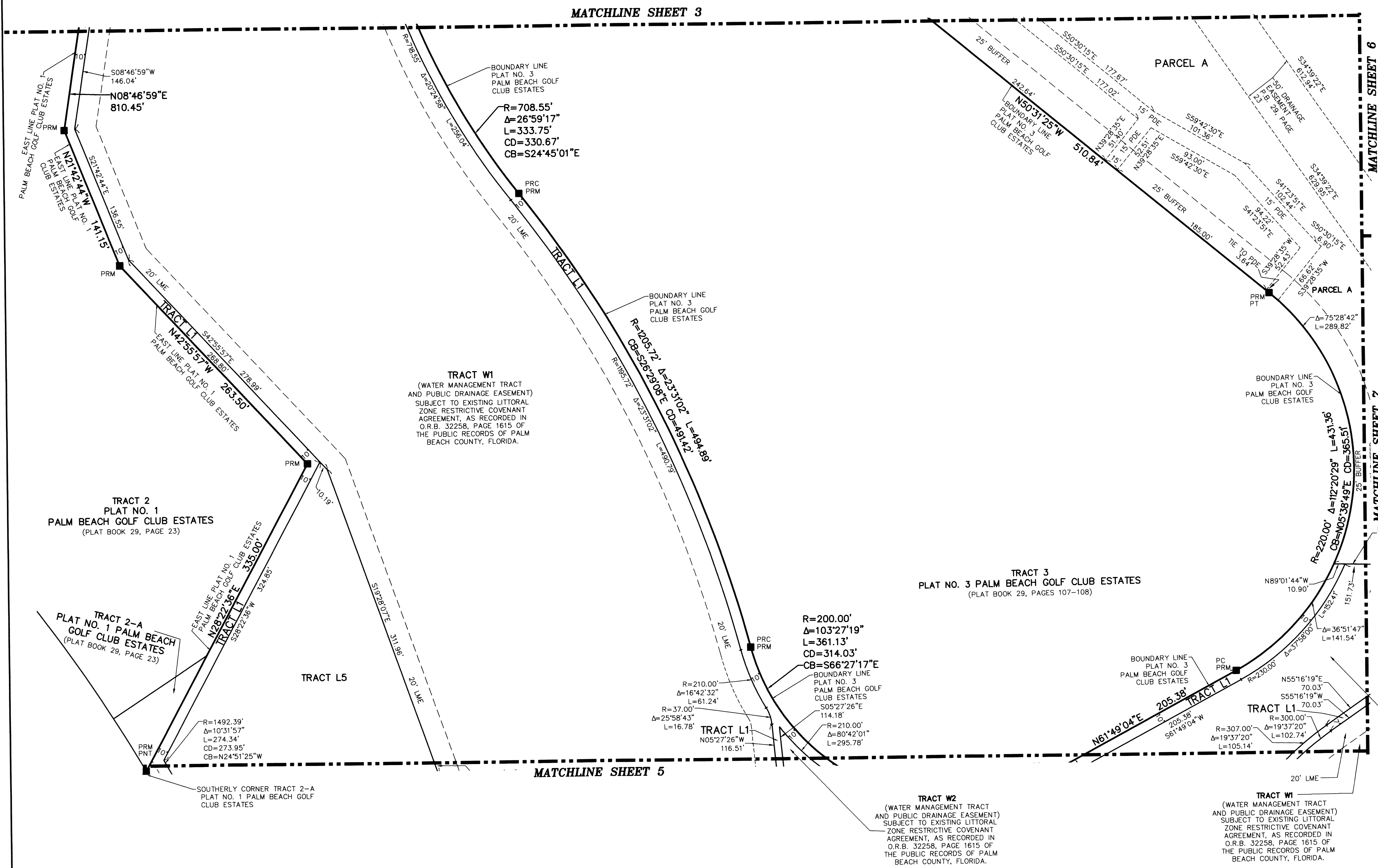
BEING A REPLAT OF PORTIONS OF BLOCK 30, PALM BEACH FARMS CO. PLAT NO. 3, ACCORDING TO THE PLAT THEREOF, AS RECORDED IN PLAT BOOK 2, PAGES 45 THROUGH 54 AND THE GOLF COURSE TRACT, PLAT NO. 3 PALM BEACH GOLF CLUB ESTATES, ACCORDING TO THE PLAT THEREOF, AS RECORDED IN PLAT BOOK 29 PAGE 107 AND ALL OF THE GOLF COURSE TRACT, PLAT NO. 4 PALM BEACH GOLF CLUB ESTATES, AS RECORDED IN PLAT BOOK 29, PAGE 204, ALL OF THE PUBLIC RECORDS OF PALM BEACH COUNTY, FLORIDA, LYING IN SECTION 27, TOWNSHIP 44 SOUTH, RANGE 42 EAST, PALM BEACH COUNTY, FLORIDA

THIS INSTRUMENT PREPARED BY
DAVID P. LINDLEY
OF
CAULFIELD & WHEELER, INC.
SURVEYORS - ENGINEERS - PLANNERS
7900 GLADES ROAD, SUITE 100
BOCA RATON, FLORIDA 33434 - (561)392-1991
CERTIFICATE OF AUTHORIZATION NO. LB3591



200

SHEET 4 OF 7



NOTES
COORDINATES, BEARINGS AND DISTANCES
COORDINATES SHOWN ARE GRID
DATUM = NAD 83 (90 ADJUSTMENT)
ZONE = FLORIDA EAST
LINEAR UNIT = US SURVEY FEET
COORDINATE SYSTEM 1983 STATE PLANE
TRANSVERSE MERCATOR PROJECTION
ALL DISTANCES ARE GROUND, UNLESS OTHERWISE NOTED
SCALE FACTOR = 1.0000295
GROUND DISTANCE X SCALE FACTOR = GRID DISTANCE
BEARINGS AS SHOWN HEREON ARE GRID DATUM
NAD 83 (1990 ADJUSTMENT), FLORIDA EAST ZONE.

LEGEND/ABBREVIATIONS
C - CENTERLINE
Δ - DELTA (CENTRAL ANGLE)
CB - CHORD BEARING
CD - CHORD DISTANCE
D.B. - DEED BOOK
E - EASTING (WHEN USED WITH COORDINATES)
L - ARC LENGTH
LME - LAKE MAINTENANCE EASEMENT
LB - LICENSED BUSINESS
N - NORTHING (WHEN USED WITH COORDINATES)
O.R.B. - OFFICIAL RECORD BOOK
PBCUE - PALM BEACH COUNTY UTILITY EASEMENT
PC - POINT OF CURVATURE
PCC - POINT OF COMPOUND CURVATURE
PRC - POINT OF REVERSE CURVATURE
PDE - PUBLIC DRAINAGE EASEMENT
PT - POINT OF TANGENCY
PNT - POINT OF NON-TANGENCY
PUD - PLANNED UNIT DEVELOPMENT
R - RADIUS
(R) - RADIAL LINE
PRM - DENOTES SET PERMANENT REFERENCE MONUMENT
SET 4" X 4" X 24" CONCRETE MONUMENT WITH
ALUMINUM DISK STAMPED C&W PRM LB3591"
UE OR U.E. - DENOTES UTILITY EASEMENT

TRACT W2
(WATER MANAGEMENT TRACT AND PUBLIC DRAINAGE EASEMENT) SUBJECT TO EXISTING LITTORAL ZONE RESTRICTIVE COVENANT AGREEMENT, AS RECORDED IN O.R.B. 32258, PAGE 1615 OF THE PUBLIC RECORDS OF PALM BEACH COUNTY, FLORIDA.

TRACT W1
(WATER MANAGEMENT TRACT AND PUBLIC DRAINAGE EASEMENT) SUBJECT TO EXISTING LITTORAL ZONE RESTRICTIVE COVENANT AGREEMENT, AS RECORDED IN O.R.B. 32258, PAGE 1615 OF THE PUBLIC RECORDS OF PALM BEACH COUNTY, FLORIDA.